



Electrical CAD

EPLAN will revolutionise your engineering. You can boost your productivity by 40-70 %, whilst at the same time significantly enhancing quality. Gone are the days of repetitive, boring tasks. EPLAN allows you to concentrate on your core area of expertise: sophisticated engineering and project management.

EPLAN generates terminal and interconnect diagrams, bills of materials, cross-references etc. fully automatically – fast and error-free. Every modification prompts an update of the evaluations, the manual rewriting of lists is now a thing of the past. This creates optimum prerequisites for maintenance and repair work.

Allow yourself to be convinced by the productivity and quality gains!

The CD contains an installation routine. Start Windows and insert the EPLAN CD-ROM in your CD-ROM drive. The installation will begin automatically. Please pay attention to the language selection!



EPLAN Software & Service GmbH & Co. KG
An der alten Ziegelei 2
40789 Monheim am Rhein · Germany
Phone: +49 (0) 21 73 / 39 64-0
Fax: +49 (0) 21 73 / 39 64-25
info@eplan.de · www.eplan.de

ePLAN[®]
Trial

First Steps



1 Foreword

Dear User,

This document is designed to help the user become familiar with the basic functions of EPLAN. It will give you a basic understanding of EPLAN and how it functions, but it was not designed as a complete instruction guide. For a complete description of all functions, please refer to the online help.

2 Handling Working Sets

EPLAN uses a working set to hold information about projects. A working set is a database that contains project and master data, such as symbols, standard sheets, forms and macros. To open a working set, pull down the **File** menu and select **Open working set**. Choose the working set suitable to your standard. (If a working set is still open, close it beforehand by selecting **Close all working sets**.)



To create a working set, pull down the **File** menu and select **New working set**. (If a working set is still open, close it beforehand by selecting **Close all working sets**.)

A working set is empty when it is created. The only symbol file available will be the "internal" symbol file. There will be no forms, standard sheets or projects in the working set. There are two ways to fill the working set with forms, standard sheets, symbol files and projects. You can create or import the files you need separately. Or, you can import or create a project. The system will automatically import the forms, standard sheets and symbols as-associated with the project or template selected.

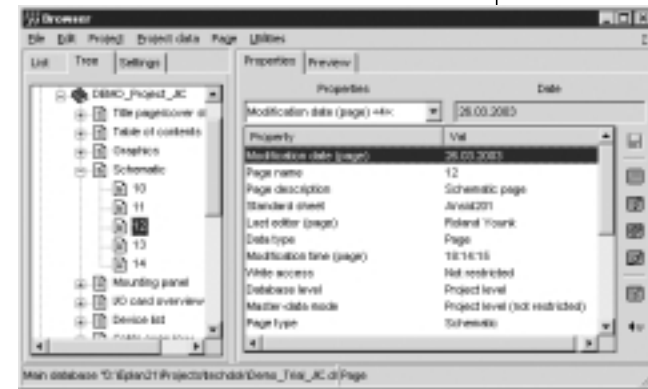
3 Browser, Project and Page Creation

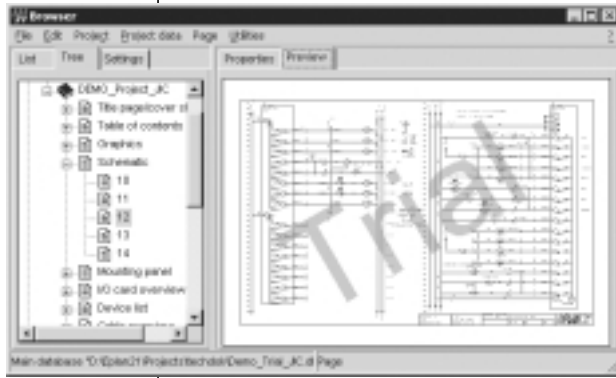
The Browser allows you to manage and manipulate the information in the working set.

The behavior of the browser is similar to the Internet Explorer. Press the right mouse button to open the pop-up menu which shows the editing options for the highlighted object. Actions like drag & drop and double-clicking allow for simple and intuitive editing.

You can view the project data either in tree or in list view. In the right part of the Browser, the properties of the highlighted objects are displayed in the **Properties tab card** and can be edited there.

The **Preview tab card** gives a graphical preview of the highlighted object; multiple selection is also possible. A double-click on the preview opens the corresponding graphical editor for each object. If, for example, a schematic page is selected, the graphical page editor is opened, however if a symbol is highlighted, the symbol editor will be launched.

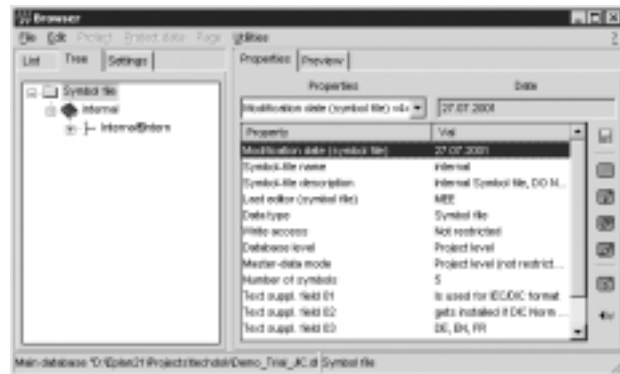




3.1 Enter the Browser

To enter the browser, pull down the **File** menu and select **Browser**. The system will open the browser.

This illustration shows what the browser looks like for a newly created working set. As stated previously, one way to fill a working set is to create a project.



3.2 Create a Project

Projects are comprised of pages of schematics, information about the components placed in the schematics and generated documentation. The schematics are drawn using the graphical editor. But projects are created and modified in the browser.

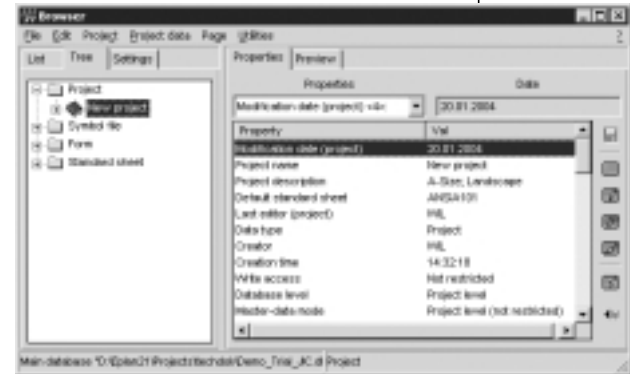
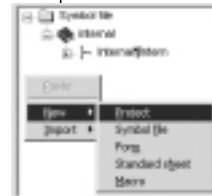
To create a project, right click in the free area of the left window, being careful not to click on the list. The system will open a pop-up menu. Select **New** and then **Project**.

The system will open the **Select template dialog**. This dialog will point to the default template directory. You can change the directory to point to any-place on the network. Select the template you wish to use. Then click on **[Open]**.

The system will ask you for the name of the project. Type in the project name and click on **[OK]**.

The system will import the forms, standard sheets and symbols associated with the template into the working set.

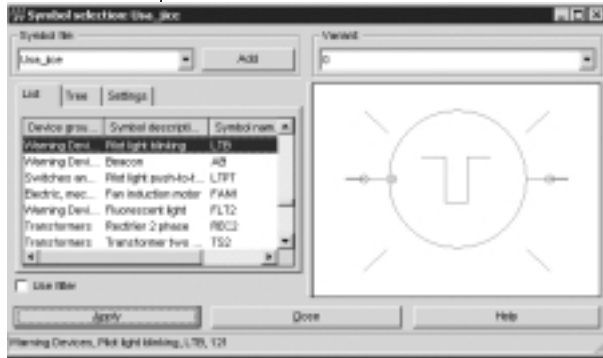
When it is completed, the system will display the tree of elements in the left-hand column, with the project's name highlighted. The project's properties will be displayed in the right-hand column.



4.1 Place a Component

You can place a symbol by using the pull down menus or by using the tool-bars. If the connection points of symbols are vertical or horizontal to each other, EPLAN automatically creates connecting lines.

Placement Using the Menus

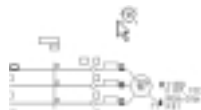


To place a component, pull down the **Insert** menu and select **Symbols**. This will open the **Symbol selection** dialog.

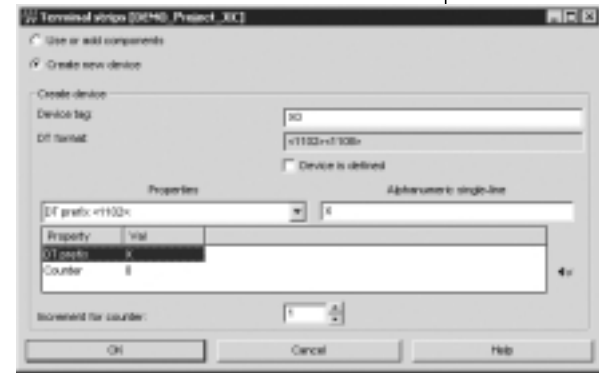
Click on the name of the symbol you wish to place and then click on **[Apply]**. As an alternative, you can insert the symbol from within the preview via drag & drop.

The system will attach the symbol to your cursor.

To select symbol orientation hold down the **Ctrl**-key and move the mouse around the symbol. This will rotate the symbol through the defined variants. When the symbol is oriented and positioned where you want it, click to place it on the page.



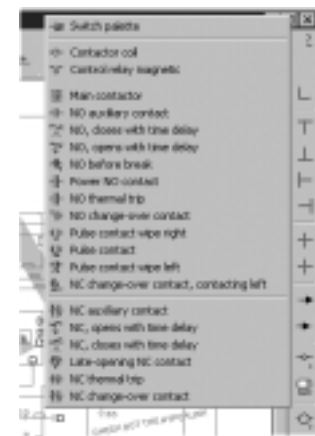
A dialog box is displayed for specific component types (e.g. terminals, coils etc.) allowing you to create new components or use existing ones. Select the **Create new device** option and confirm by clicking **[OK]**.



Placement Using the Toolbars

The right-hand toolbar in the project graphical editor can be used to select symbols. If the button has a small red arrow pointing to the right, the button will bring up another toolbar.

Clicking on the button will place the symbol on your cursor, you can then place it on the page.



A dialog box is displayed for specific component types (e.g. terminals, coils etc.) allowing you to create new components or use existing ones. Select the **Create new device** option and confirm by clicking **[OK]**.

